

## Mozambique Digital Atlas - MozDA

**MozDA** is a joint project between INP (Institute National Petroleum in Mozambique) and ERCL to create the first digital petroleum atlas and map library of Mozambique, both onshore and offshore.

**MozDA** will include geological analysis, seismic interpretation, mapping and prospectivity. The atlas will be based on material from the INP archives including released data, and released reports supplemented by ERCL regional knowledge.

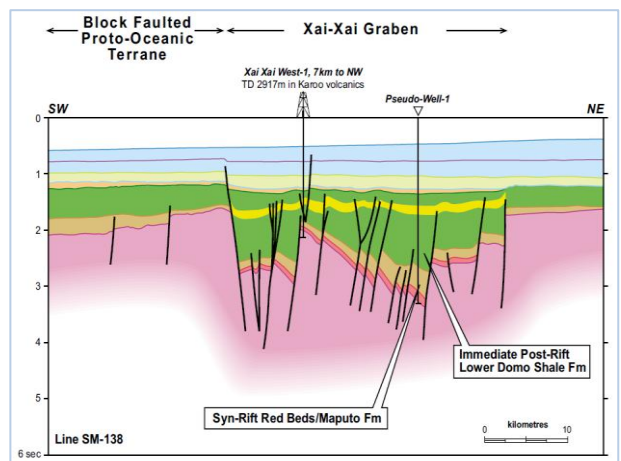
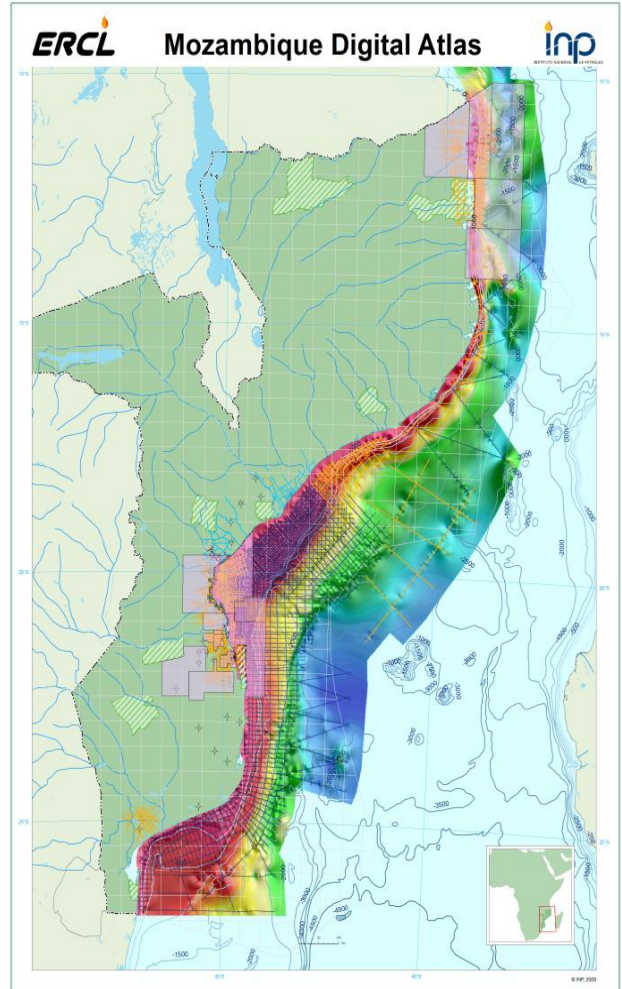
**MozDA** will provide an update to the ENH/ECL 2000 report and will initially be released in GIS format and as framework projects for SMT Kingdom, DUG and GeoGraphix workstations.

**MozDA** 2012 release will contain a series of gridded (1km) two-way time structure maps of five key stratigraphic boundaries of basin-wide and semi-regional significance with its extent and character described.

The atlas includes key seismic profiles which tie together the available well control and provide the framework for the interpretation.

The well database includes updated well coordinates formation tops and where available time depth charts. Gravitational, magnetic, topographic and bathymetric data is also available in the form of digital grids and as prepared maps.

All the digital grids are provided as pre-prepared maps in pdf format. These maps are included at varying scales of basin-wide and regional coverage.



## Mozambique Digital Atlas - MozDA

**MozDA** is a joint project between INP (Institute National Petroleum in Mozambique) and ERCL to create the first digital petroleum atlas and map library of Mozambique, both onshore and offshore. The primary project deliverables include a GIS project, report and interpretation workstation projects as outlined below;

### Horizons / Grids

- Sea Bed
- Pliocene
- Miocene
- Oligocene
- Eocene
- Base Tertiary (Top Lower Grudja)
- Top Domo
- Top Lower Domo (Shale)
- Top Maputo
- Top Karoo

### Well Data

- Spreadsheet / database
- Well Headers
- Formation Tops
- Option – Well Logs

### Seismic Data

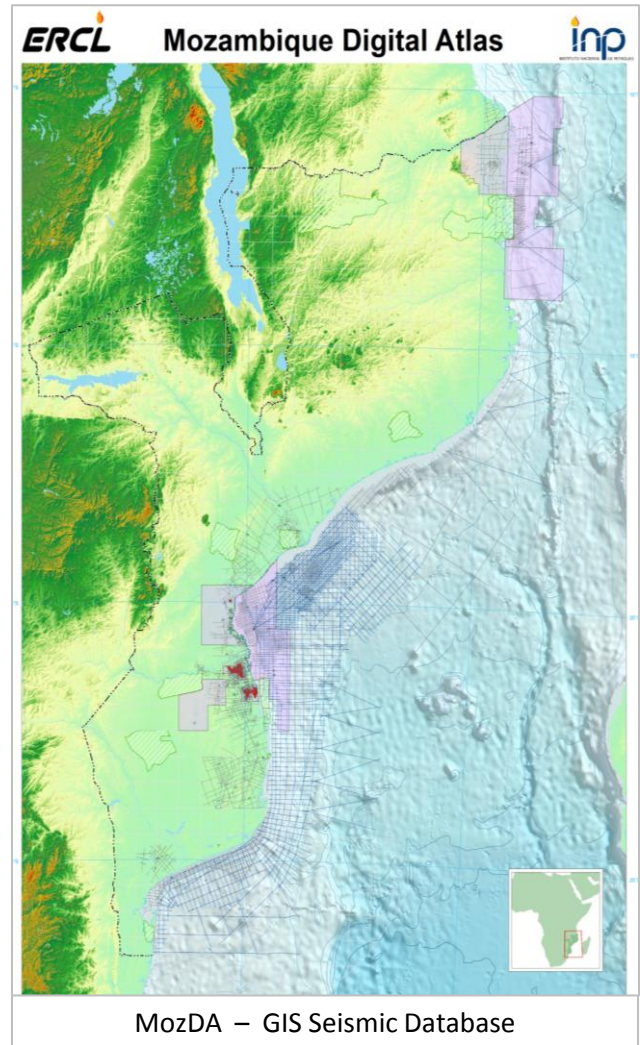
- Spreadsheet / database
- Seismic Navigation
- Selected Seismic Lines (SEGY & pdf)
- Option – detailed seismic lines

### Other Data Options

- Potential Field Data
- Geological Data
- Seismic Data (SEGY)

### Workstation / PC Projects

- ArkGIS
- SMT Kingdom
- DUG
- GeoGraphix



For more information about pricing and availability of the Mozambique Digital Atlas please contact:

email: [huw.edwards@ercl.com](mailto:huw.edwards@ercl.com)

tel: +44 1491 578117